



**State Water Resources Control Board  
 Temporary Urgency Change Order (6/17/2022)  
 Russian River Hydrologic Report  
 December 9, 2022 - December 15, 2022**

Prepared as a requirement of the Order approving Sonoma Water's Petition for Temporary Urgency Change in Permits 12947A, 12949, 12950, and 16596 (Applications 12919A, 15736, 15737, and 19351).

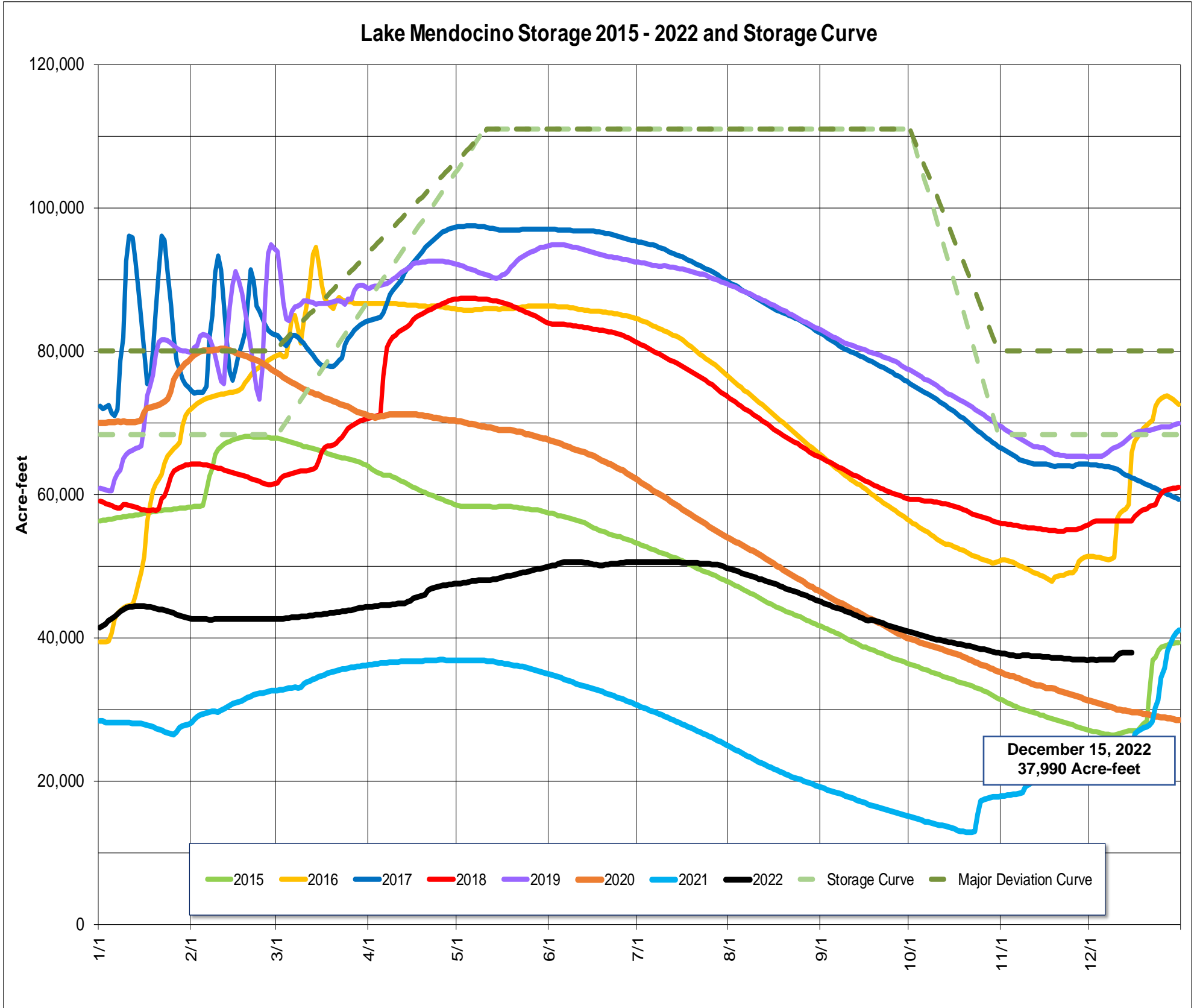
**Instream Flow Requirements as of December 15, 2022**

Basis	Reach	Instantaneous (cfs)	5-day Average (cfs)
Modified Per Order: Critical Condition	Upper Russian River	<b>25</b>	-
D-1610: Critical Condition	Dry Creek	<b>75</b>	-
Modified Per Order: Critical Condition	Lower Russian River	<b>35</b>	-

Upper and Lower Russian River based on criteria as established in the Order issued 6/17/2022.

**Lake Mendocino**

**Lake Mendocino Storage 2015 - 2022 and Storage Curve**

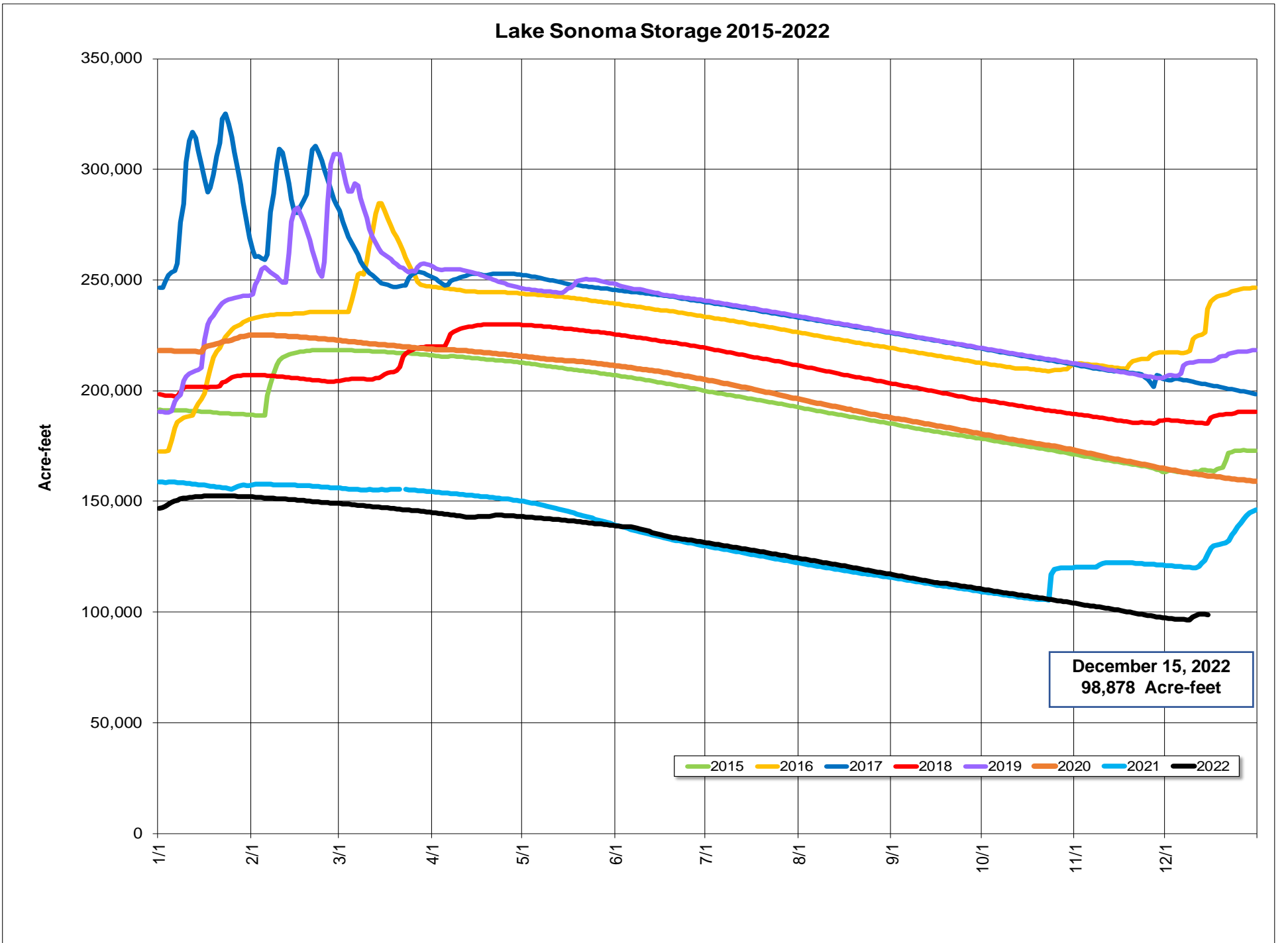


Storage (acre-feet)	December 15, 2022	<b>37,990</b>	
		Total	Average Daily Rate
Change in Storage (acre-feet)	Last 30 days	<b>621</b>	<b>21</b>
	Last 7 days	<b>976</b>	<b>139</b>
Daily Inflow (cfs)	Last 7 days	Min	<b>30</b>
		Max	<b>268</b>
		Mean	<b>99</b>
Release (cfs)	Last 7 days	Min	<b>27</b>
		Max	<b>28</b>
		Mean	<b>27</b>

# Lake Sonoma



Nathan Baskett, March 3, 2011



Storage (acre-feet)	December 15, 2022	<b>98,878</b>	
Change in Storage (acre-feet)	Last 30 days	<b>-2,033</b>	<b>Average Daily Rate</b>
	Last 7 days	<b>2,568</b>	<b>367</b>
Daily Inflow (cfs)	Last 7 days	Min	<b>39</b>
		Max	<b>746</b>
		Mean	<b>280</b>
Release (cfs)	Last 7 days	Min	<b>81</b>
		Max	<b>120</b>
		Mean	<b>103</b>

# Potter Valley Project

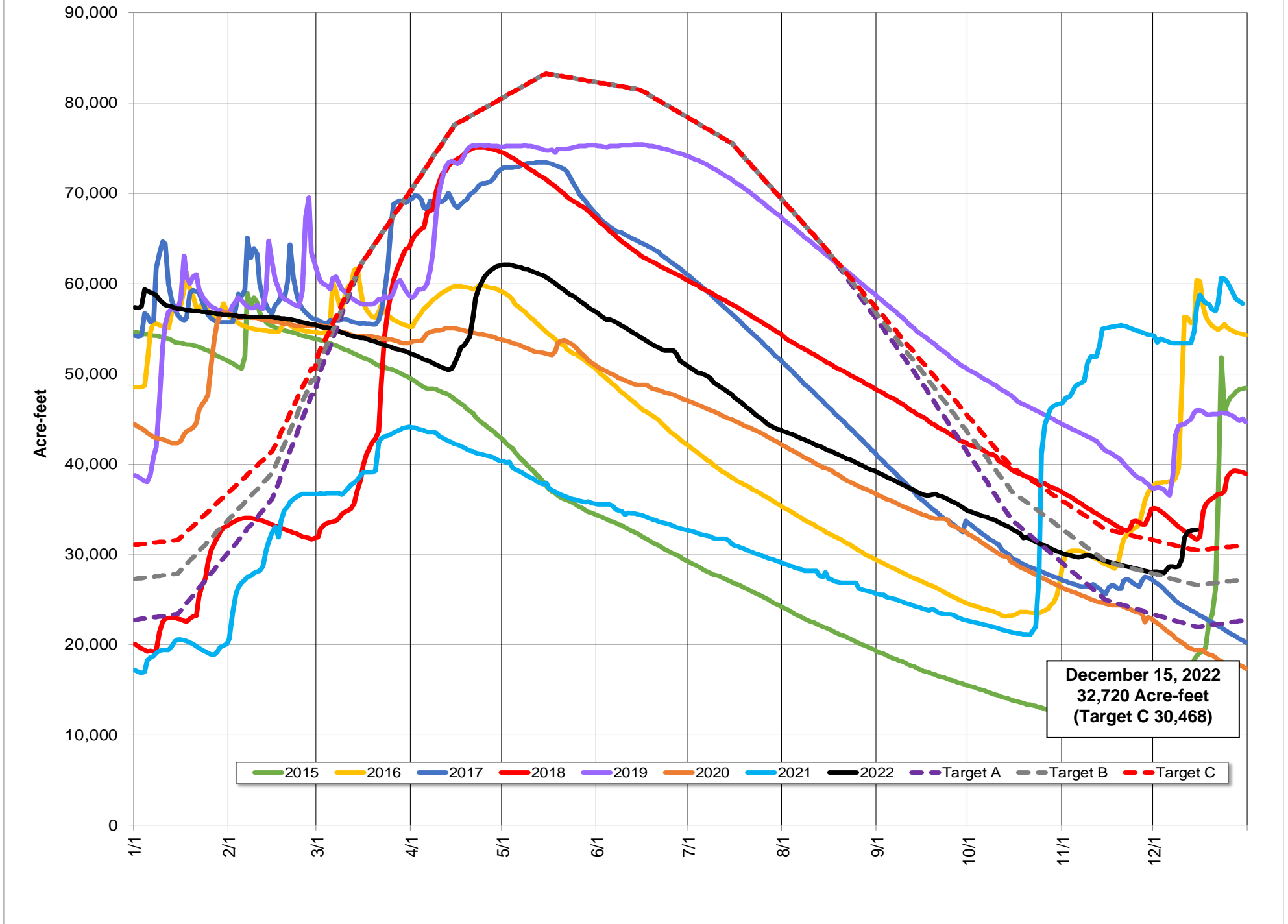
PVP Diversion (cfs)	December 15, 2022	11
---------------------	-------------------	----

## Lake Pillsbury

Parameter	Date Range	Cumulative	Daily Average
Inflow* (acre-feet)	October 1, 2022 - December 15, 2022	13,393	176
	Last 7 days	6,056	865

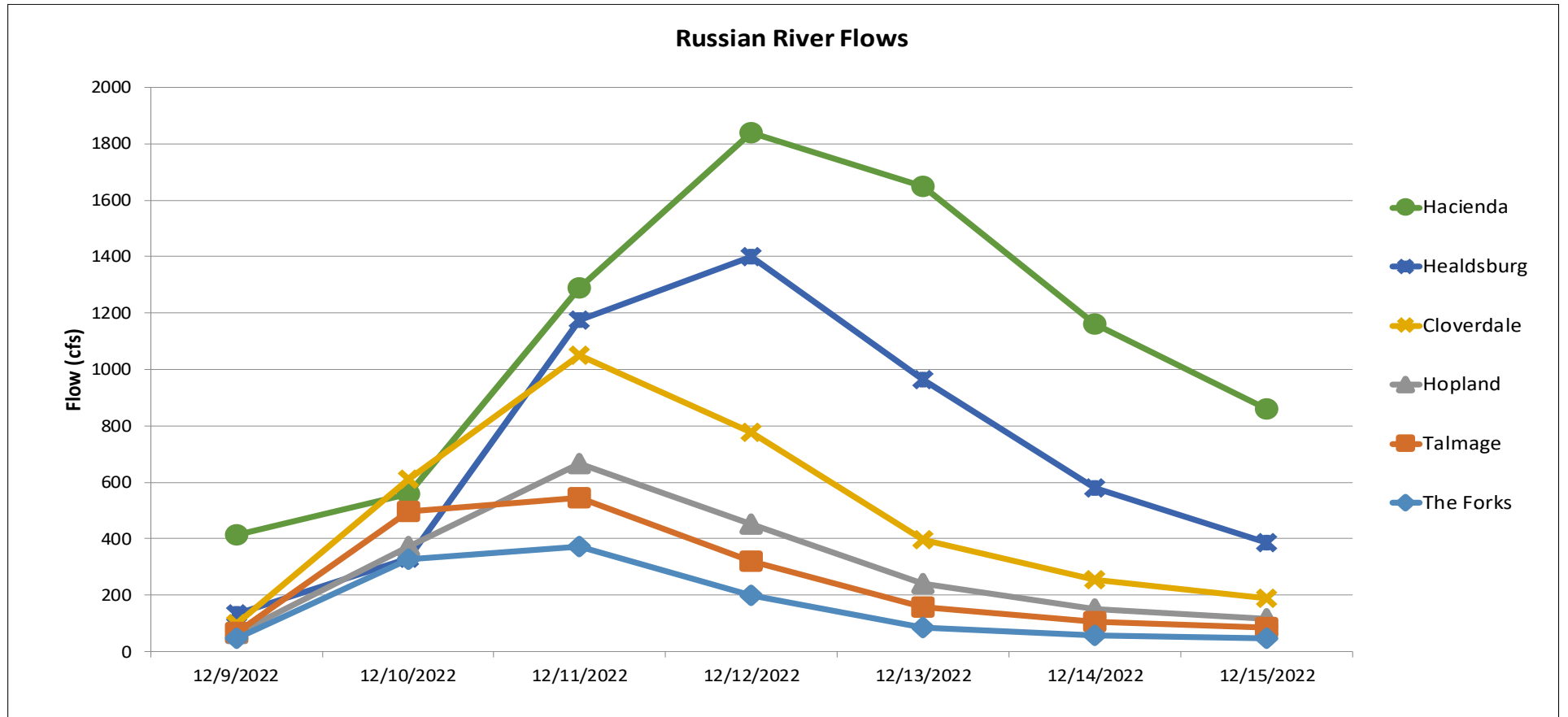
\*Inflow calculation based on criteria established in D1610

### Lake Pillsbury Storage 2015-2022 and Target Storage Scenarios



Gage	24-hr Average Flow (cfs)						
	Dec 9, 2022	Dec 10, 2022	Dec 11, 2022	Dec 12, 2022	Dec 13, 2022	Dec 14, 2022	Dec 15, 2022
The Forks*	45	328	370	198	85	57	47
Talmage USGS 11462080	66	498	544	318	158	105	84
Hopland USGS 11462500	65	372	667	451	239	151	114
Cloverdale USGS 11463000	99	612	1050	777	396	252	189
Healdsburg USGS 11464000	132	329	1176	1398	964	580	386
Hacienda USGS 11467000	412	559	1290	1841	1650	1159	859

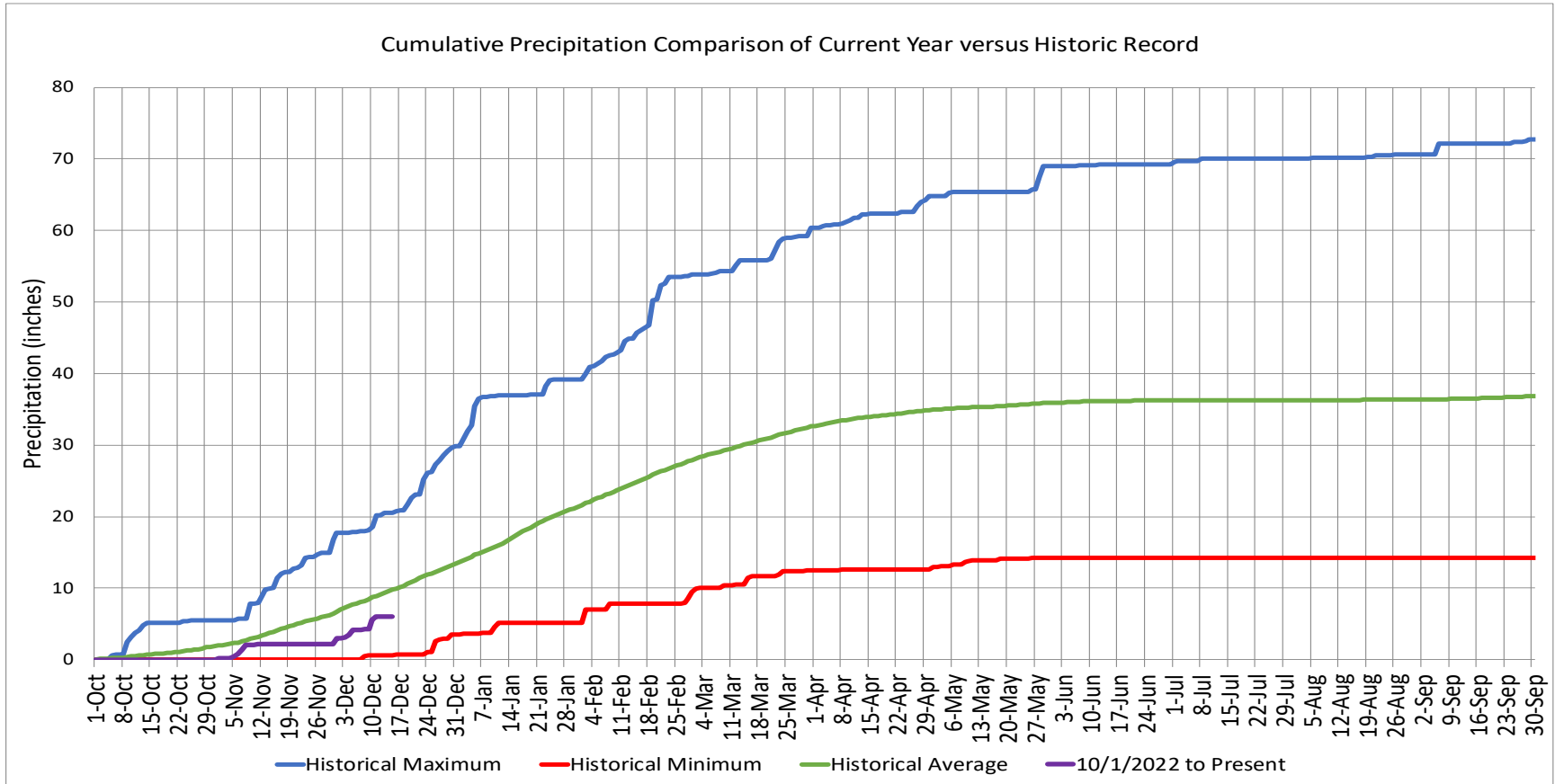
\*West Fork(USGS 11461000) + East Fork (Coyote Valley Dam Release)



## Precipitation

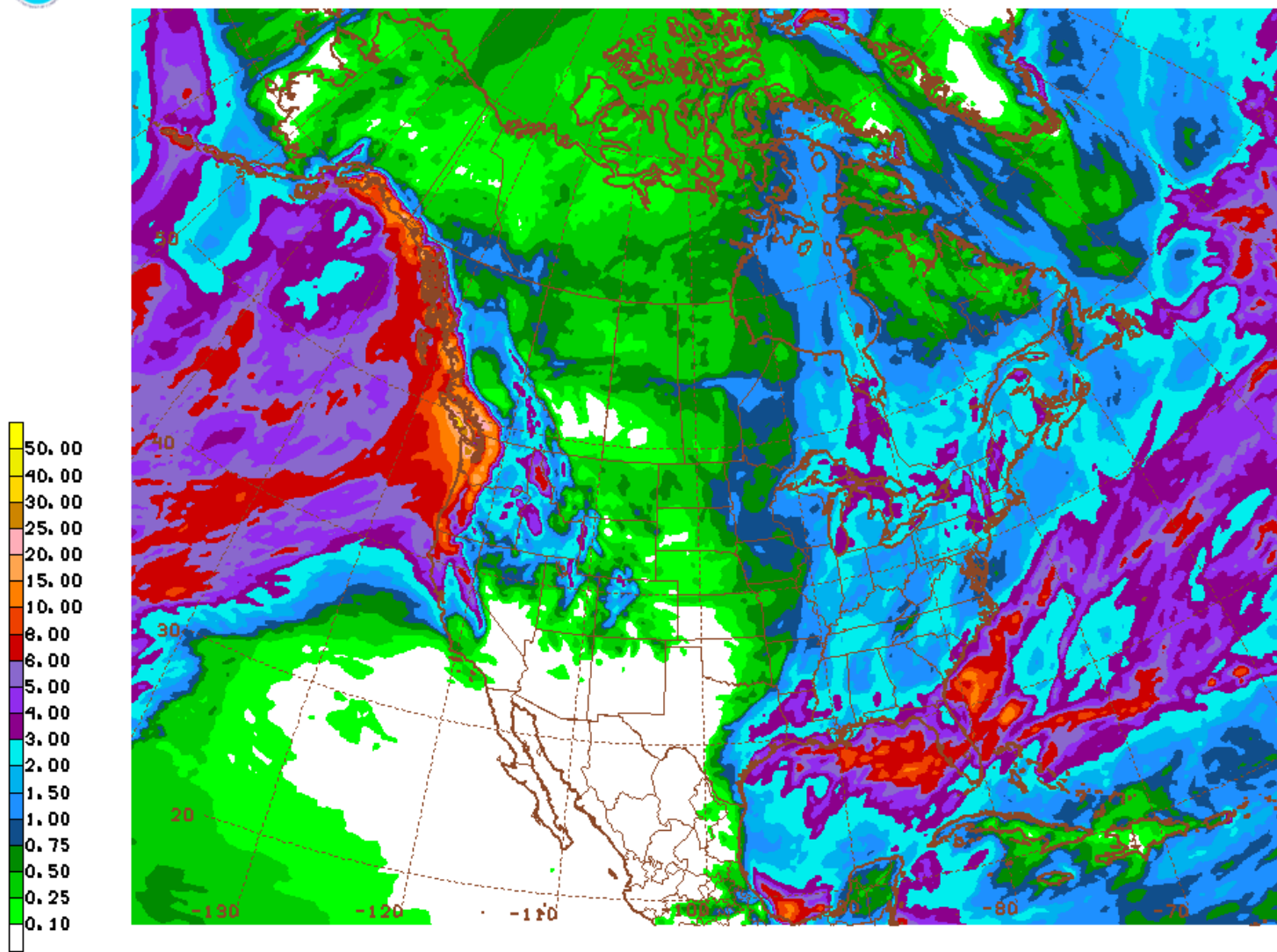
Ukiah Municipal Airport (WBAN: 72590523275 (KUKI))

Date Range	Cumulative (inches)
Oct 1, 2022 - Dec 15, 2022	<b>6.04</b>
Last 7 Days*	<b>1.77</b>



## Global Forecast System Model 16-day Cumulative Precipitation Forecast

GFS 12/19/22 12UTC 384HR FCST VALID WED 01/04/23 12UTC NOAA/NWS/NCEP



GFS WED 230104/1200Y384 384HR ACCUMULATED PRECIP (IN)

Date Range  
Dec 19 - Jan 4, 2023

Forecasted Cumulative (inches)  
**4.27**

## Russian River Fisheries Monitoring

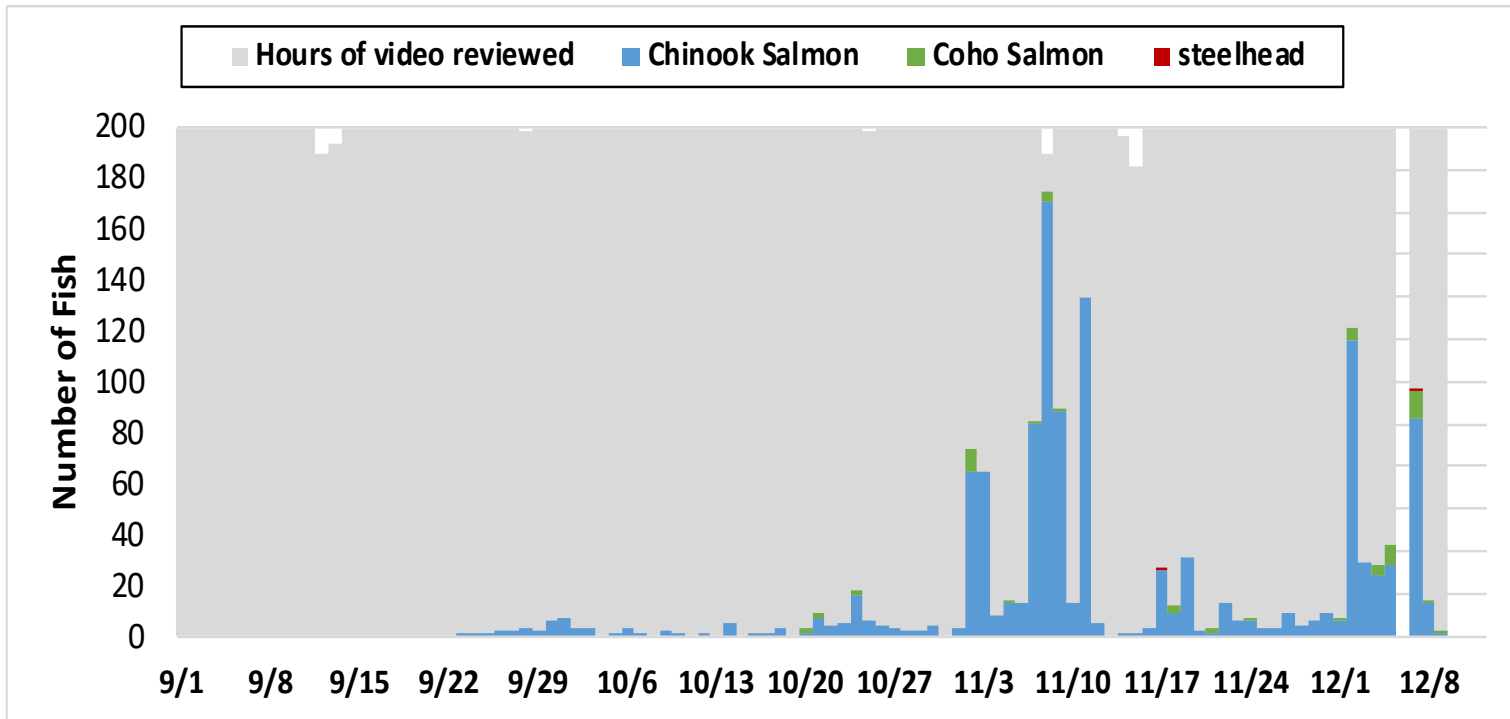


Figure 1. Number of adult salmonids and proportion of each day reviewed for video monitoring data collected at the Mirabel dam, 2022.

Week	<i>Chinook Salmon</i>		<i>Coho Salmon</i>		<i>Steelhead</i>	
	2022	2000-2019 Avg	2022	2000-2019 Avg	2022	2000-2019 Avg
09/01	0	0.05%	0	0.00%	0	0.65%
09/08	0	0.14%	0	0.00%	0	0.65%
09/15	0	0.24%	0	0.10%	0	0.71%
09/22	10	0.59%	0	0.00%	0	0.93%
09/29	22	6.10%	0	0.30%	0	1.30%
10/06	8	3.57%	0	0.61%	0	1.30%
10/13	10	13.30%	0	1.73%	0	2.35%
10/20	43	13.66%	6	3.05%	0	1.42%
10/27	79	17.31%	9	1.12%	0	1.27%
11/03	441	20.08%	7	4.47%	0	2.16%
11/10	156	9.73%	0	8.12%	0	4.88%
11/17	88	7.69%	5	23.45%	1	8.90%
11/24	40	3.37%	1	24.77%	0	14.83%
12/01	288	2.69%	29	7.51%	1	15.17%
12/08	14	0.74%	2	9.44%	0	15.76%
12/15		0.42%		8.83%		15.01%
12/22		0.22%		3.45%		9.24%
12/29		0.09%		3.05%		3.49%

Table 1. Weekly totals of adult salmonids observed on the Mirabel dam video camera.